



Ai Urban
DEVELOPERS



Ai Urban
DEVELOPERS





Ai Urban
DEVELOPERS

Company Profile

Ai Urban Developers is a trusted construction and development company known for its consistent delivery, high standards, and modern building practices.

Since 2001, we have been actively associated with Bahria Town Lahore as an approved contractor, completing over 500+ infrastructure and residential projects across:

- Bahria Town
- Bahria Orchard
- Ali Housing Society
- Johar Town
- LDA Avenue 1
- Maraghzar Colony
- Wapda Town phase 1-2

Our work has earned recognition for being on schedule, uncompromised in quality, and professionally executed.

Backed by a skilled team of architects, engineers, and construction experts, Ai Urban Developers continues to build projects rooted in precision, reliability, and long-term value.

Founder's

MESSAGE

At **AI URBAN DEVELOPERS**, we aim to create more than concrete and steel, we build trust, stability, and the promise of a better life.

PEARL HOMES reflects our mission to craft homes that combine modern design, practical living, and long-term value for families who seek more than just a house, they seek belonging."

Mr. Ijaz Ahmad
CEO & Founder,
Ai Urban Developers





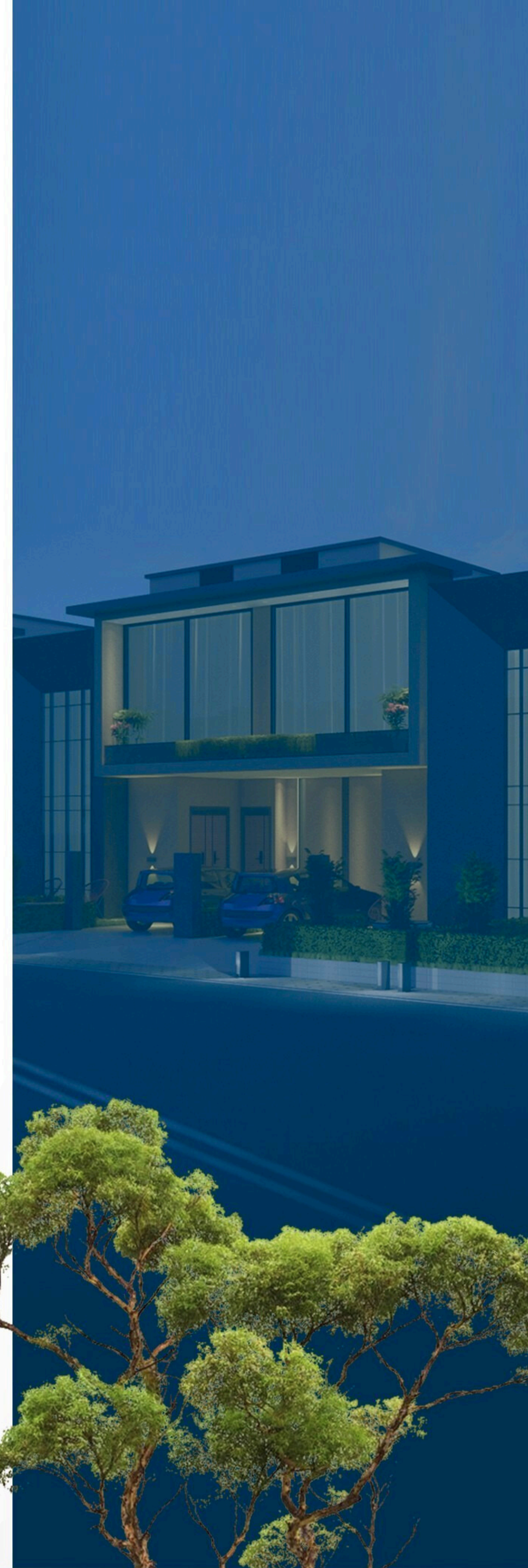
Ai Urban
DEVELOPERS

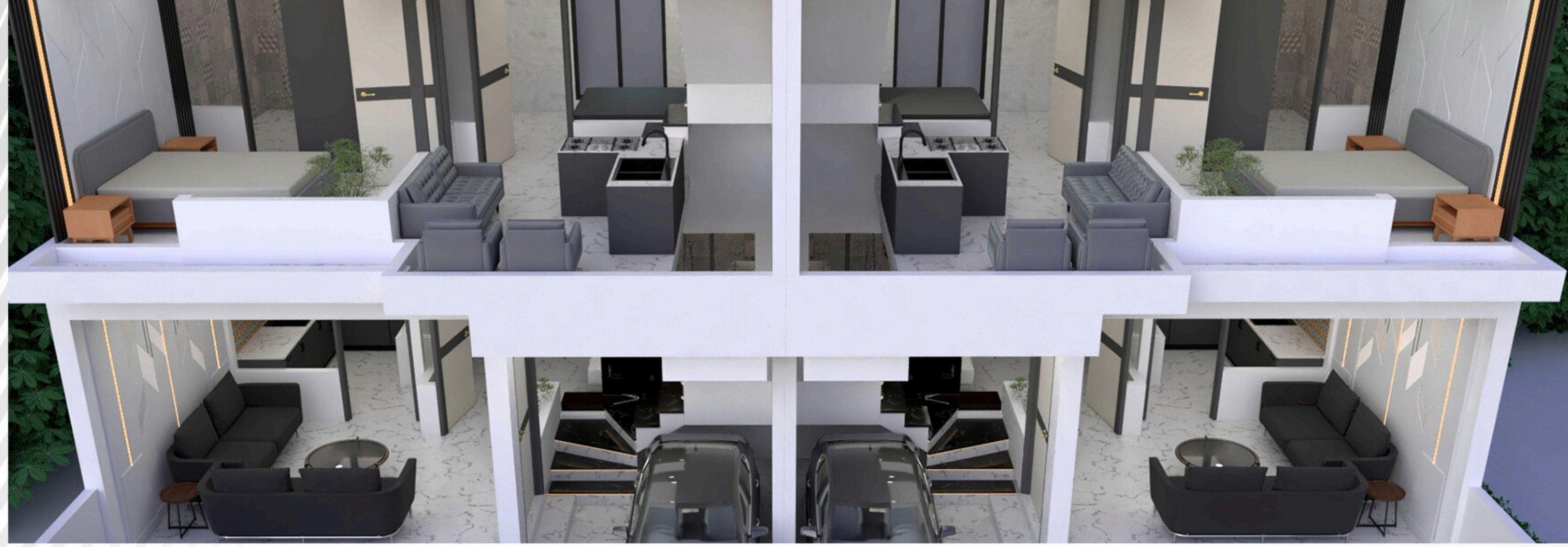
PROJECT DETAILS & OVERVIEW

Ai Urban Developers is a modern residential project designed for families who want smart planning, elegant design, and dependable construction quality.

PROJECT HIGHLIGHTS

- ▶ Available Options: 3 Marla Double-Storey Units.
- ▶ Contemporary front elevation with premium finishes.
- ▶ Spacious, naturally lit bedrooms & lounges.
- ▶ Smart circulation and family-friendly layouts.
- ▶ Strong, RCC-based construction with quality materials.

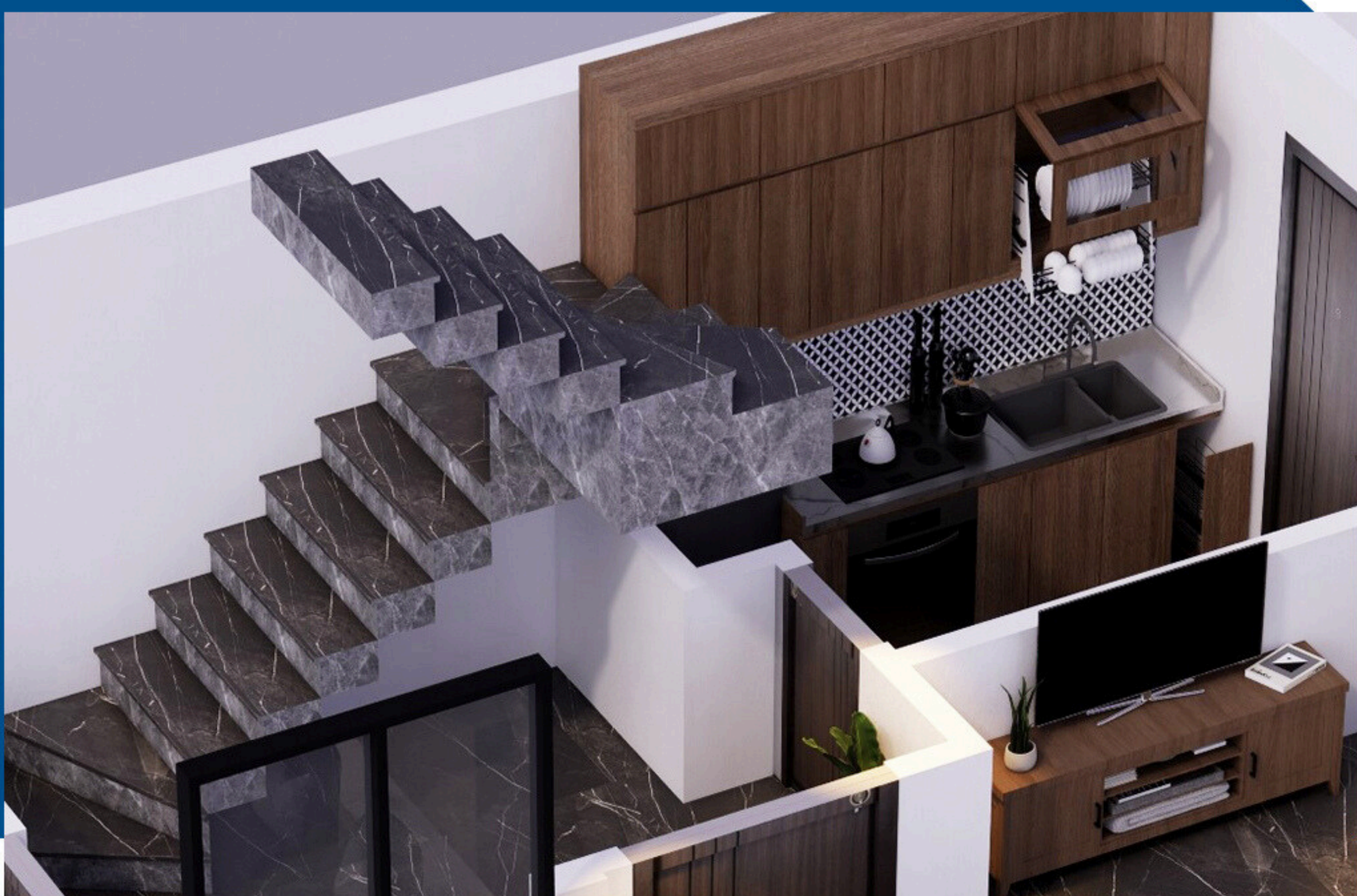




FEATURES & CONSTRUCTION

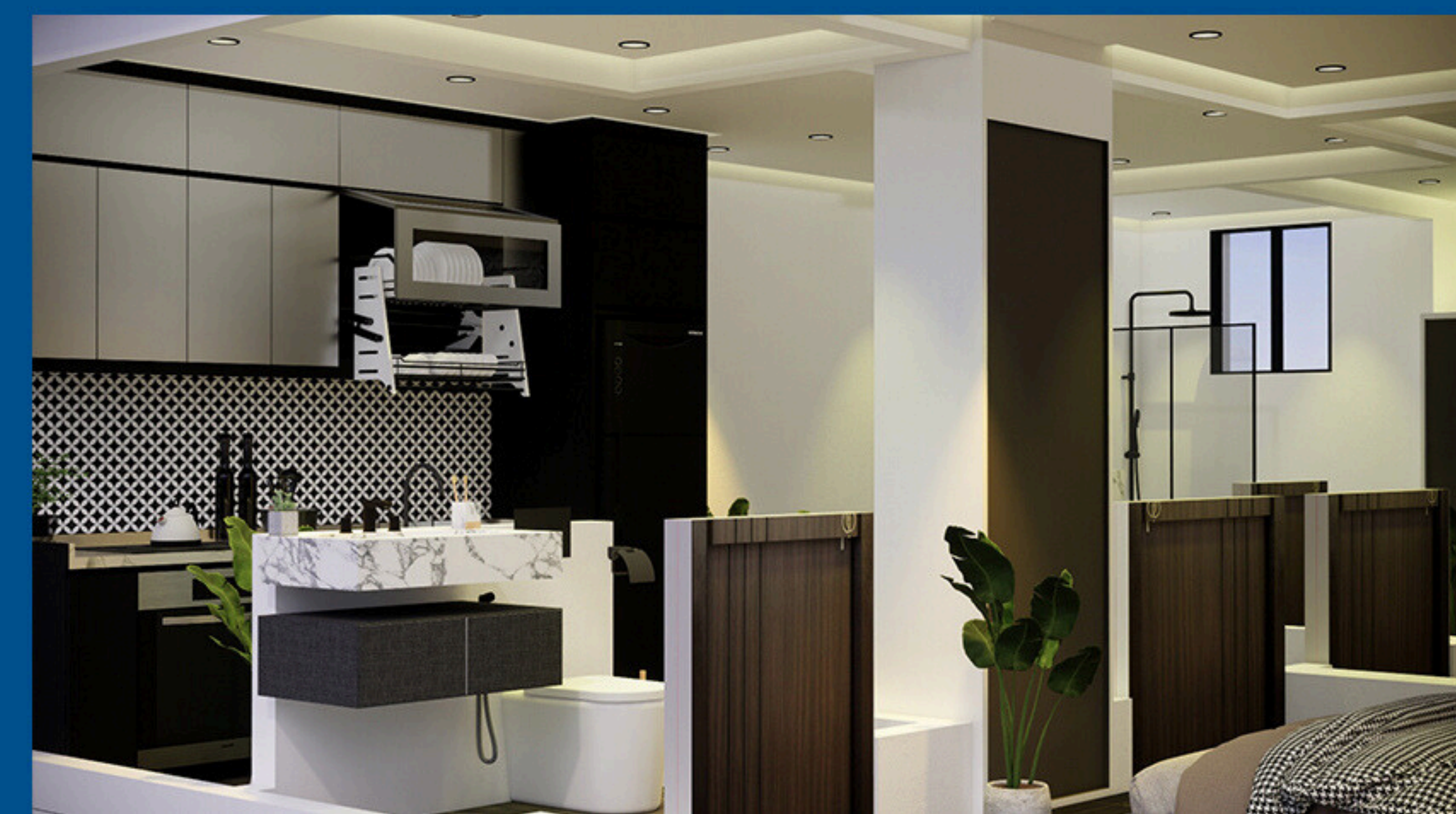
KEY FEATURES

- ▶ Efficient layout planning.
- ▶ Bright, airy interiors with natural light.
- ▶ Modern modular kitchen.
- ▶ Elegant bathrooms with contemporary fixtures.
- ▶ Integrated living, dining & outdoor spaces.
- ▶ Family lounge, terrace, and dedicated storage areas.



CONSTRUCTION STANDARDS

- ▶ Earthquake-resistant RCC structure
- ▶ Mechanical concrete compaction
- ▶ Double-layer waterproofing
- ▶ High-grade plumbing & concealed electrical systems





OUR SMART LAYOUTS

Transform every square feet into meaningful living. Open lounges, thoughtfully placed rooms, and natural light work together to create a home that feels spacious, balanced, and effortlessly elegant.



FIRST FLOOR

GROUND FLOOR

PAYMENT PLAN *Highlights*

KEY FEATURES

- ▶ Monthly Installment: **PKR 95,000**
- ▶ Total Duration: **2.5 Years Payment Plan**

LOCATION *Highlights*

PRIME LOCATION & EASY CONNECTIVITY

- ▶ Only 2 MINUTES from Bahria Town
- ▶ Main Multan Road Near Mohlanwal
- ▶ 2 MINUTES from Canal Road
- ▶ 5 MINUTES from Raiwand Road
- ▶ 17 MINUTES from Airport

Surrounded by Leading:

- ▶ Schools
- ▶ Parks
- ▶ Mosques
- ▶ Medical facilities
- ▶ Commercial areas

